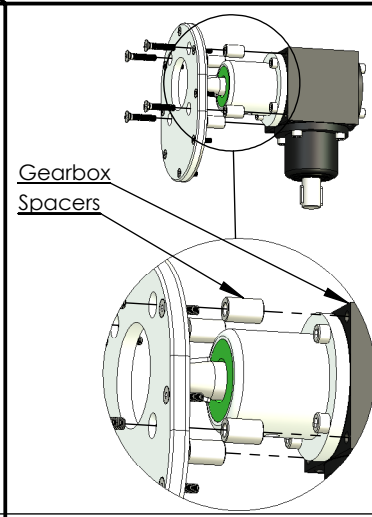
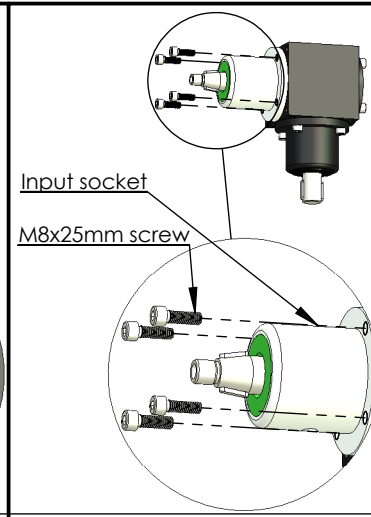


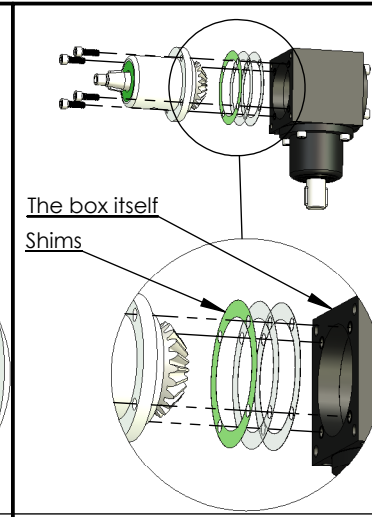
1. When maintaining your bevel gearbox with quick mount cover plate, you have to release the gearbox from the cover plate. Use a 5mm Allen key to dismount 4pcs M8x40mm screws.



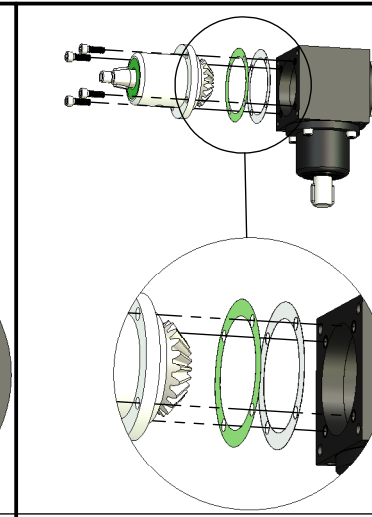
2. Be careful not to lose the spacers between the cover plate and the gearbox. Pull the gearbox out of the cover plate.



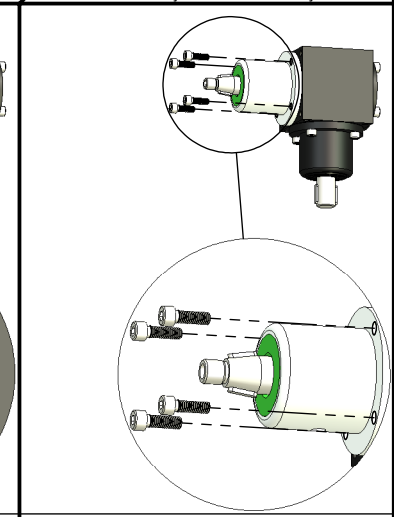
3. To remove play in your bevel box, use one 8mm Allen key to dismount 4pcs of M8x25mm screws from one input socket.



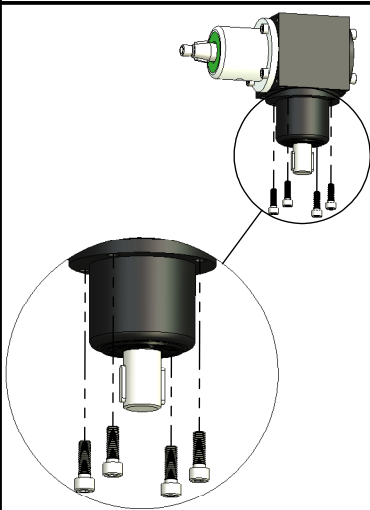
4. Pull out input socket to reveal the shims between input socket and the box itself.



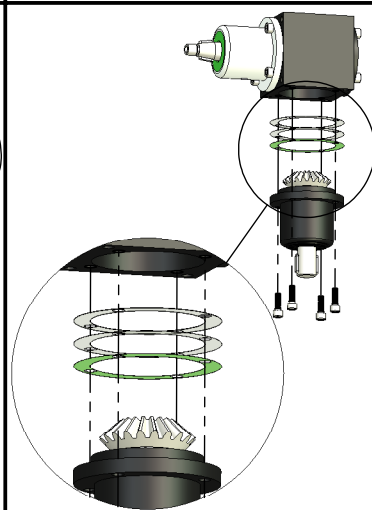
5. Reduce thickness between input socket and the box by removing only one shim. The shims have different thickness.



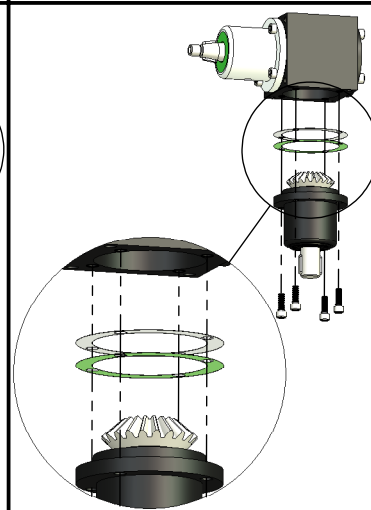
6. After removing the necessary shim you are ready to reassemble your bevel gearbox. Put needed shims on input socket and input socket on box. Use 8mm Allen key to mount 4pcs of M8x25mm screws.



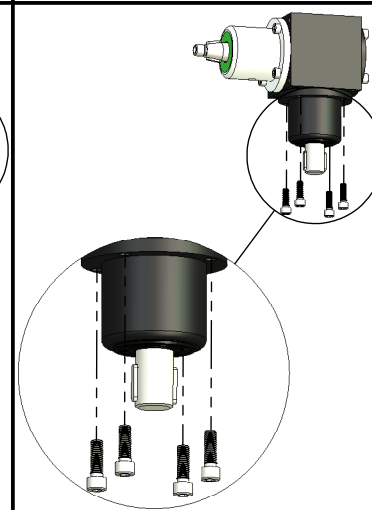
7. If you believe your gearbox is okay, go to step 11 for control. If you still have play in your bevel gearbox use the same approach with the other input socket. Use 8mm Allen key, dismount 4pcs screw.



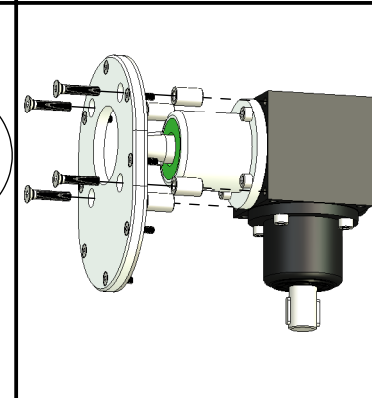
8. Pull out input socket to reveal the shims between input socket and the box itself.



9. Reduce thickness between input socket and the box, by removing only one shim. The shims have different thickness.



10. Reassemble your bevel gearbox. Put needed shims on input socket and input socket on box. Use 8mm Allen key to mount 4pcs of M8x25mm screws.



11. If you still have play in your bevel gearbox please go through the manual again from step 3, if the bevel gearbox is too hard then you need to add shim thickness. When you have a good feeling on the bevel gearbox shafts and you are just able to rotate the shaft by hand, then your re-shimming is a success. It's allowed to have a bit toothy feeling when rotating the shaft. Put the steering input socket on the bevel gearbox through the hole on the cover plate. Mount your 4pcs of M8x40mm screws through the cover plate, through the spacers and into your bevel gearbox. Now the maintenance of your bevel gearbox is done.